



Rab L2A Polyclonal Antibody

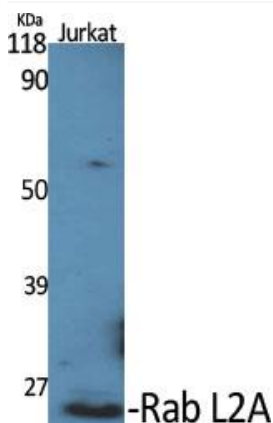
Catalog No	YP-Ab-16208
Isotype	IgG
Reactivity	Human;Rat;Mouse;
Applications	WB;IHC;IF;ELISA
Gene Name	RABL2A
Protein Name	Rab-like protein 2A
Immunogen	The antiserum was produced against synthesized peptide derived from human RABL2A. AA range:179-228
Specificity	Rab L2A Polyclonal Antibody detects endogenous levels of Rab L2A protein.
Formulation	Liquid in PBS containing 50% glycerol, 0.5% BSA and 0.02% sodium azide.
Source	Polyclonal, Rabbit,IgG
Purification	The antibody was affinity-purified from rabbit antiserum by affinity-chromatography using epitope-specific immunogen.
Dilution	WB: 1/500 - 1/2000. IHC: 1/100 - 1/300. ELISA: 1/20000.. IF 1:50-200
Concentration	1 mg/ml
Purity	≥90%
Storage Stability	-20°C/1 year
Synonyms	RABL2A; Rab-like protein 2A
Observed Band	30-34kD
Cell Pathway	intracellular,
Tissue Specificity	Expressed in the testis.
Function	similarity:Belongs to the small GTPase superfamily. Rab family.,
Background	This gene is a member of the RAB gene family which belongs to the RAS GTPase superfamily. The proteins in the family of RAS-related signaling molecules are small GTP-binding proteins that play important roles in the regulation of exocytotic and endocytotic pathways. This gene maps to the site of an ancestral telomere fusion event and may be a subtelomeric gene. Alternative splicing results in multiple transcript variants encoding different isoforms. [provided by RefSeq, Apr 2015],
matters needing attention	Avoid repeated freezing and thawing!



Usage suggestions

This product can be used in immunological reaction related experiments. For more information, please consult technical personnel.

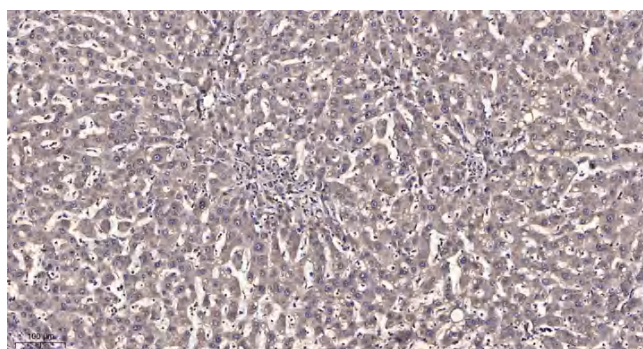
Products Images



Western Blot analysis of various cells using Rab L2A Polyclonal Antibody diluted at 1:500



Western Blot analysis of COLO205 cells using Rab L2A Polyclonal Antibody diluted at 1:500



Immunohistochemical analysis of paraffin-embedded human liver cancer. 1, Antibody was diluted at 1:200(4° overnight). 2, Tris-EDTA,pH9.0 was used for antigen retrieval. 3,Secondary antibody was diluted at 1:200(room temperature, 45min).